



3 BHK Residences, Jagatpura- Jaipur

Live where true luxury thrives



Quality meets Comfort at



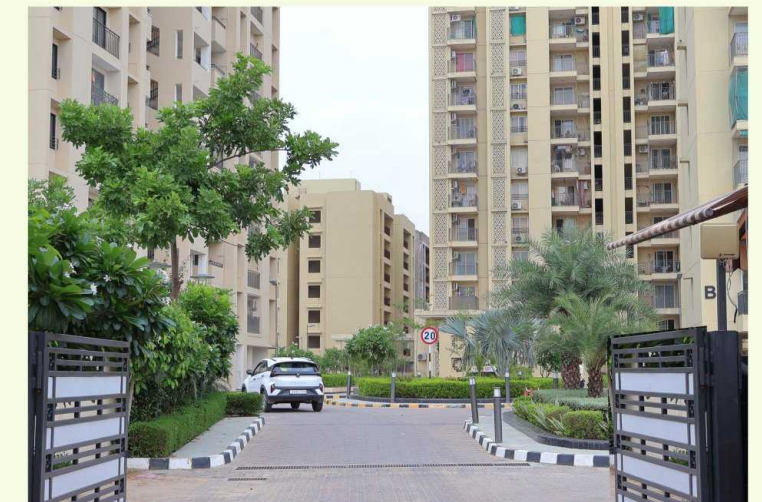
3 BHK Residences, Jagatpura- Jaipur

Land Area 8.09 acres

Phase-I : B,C,D,E,F & G Block - 269 Flats (Sold Out)

Phase-II : A, H, I Block - 102 Flats (Possession Started)

Phase-II A : J, K, L, M & N Block - 216 Flats (Under Construction)



Prime location

Today, Jagatpura is one of the most developing and sought-after places for any residential or commercial enterprise, and people have started to relocate there. Vedanta which is also located in Jagatpura creates a wonderful and ideal house for you and your family to live a modern lifestyle. This project provides convenient access to important locations. Its proximity to various important hospitals, academic institutions, Jaipur International Airport, and Jagatpura Railway Station will make your life easier and more appealing.

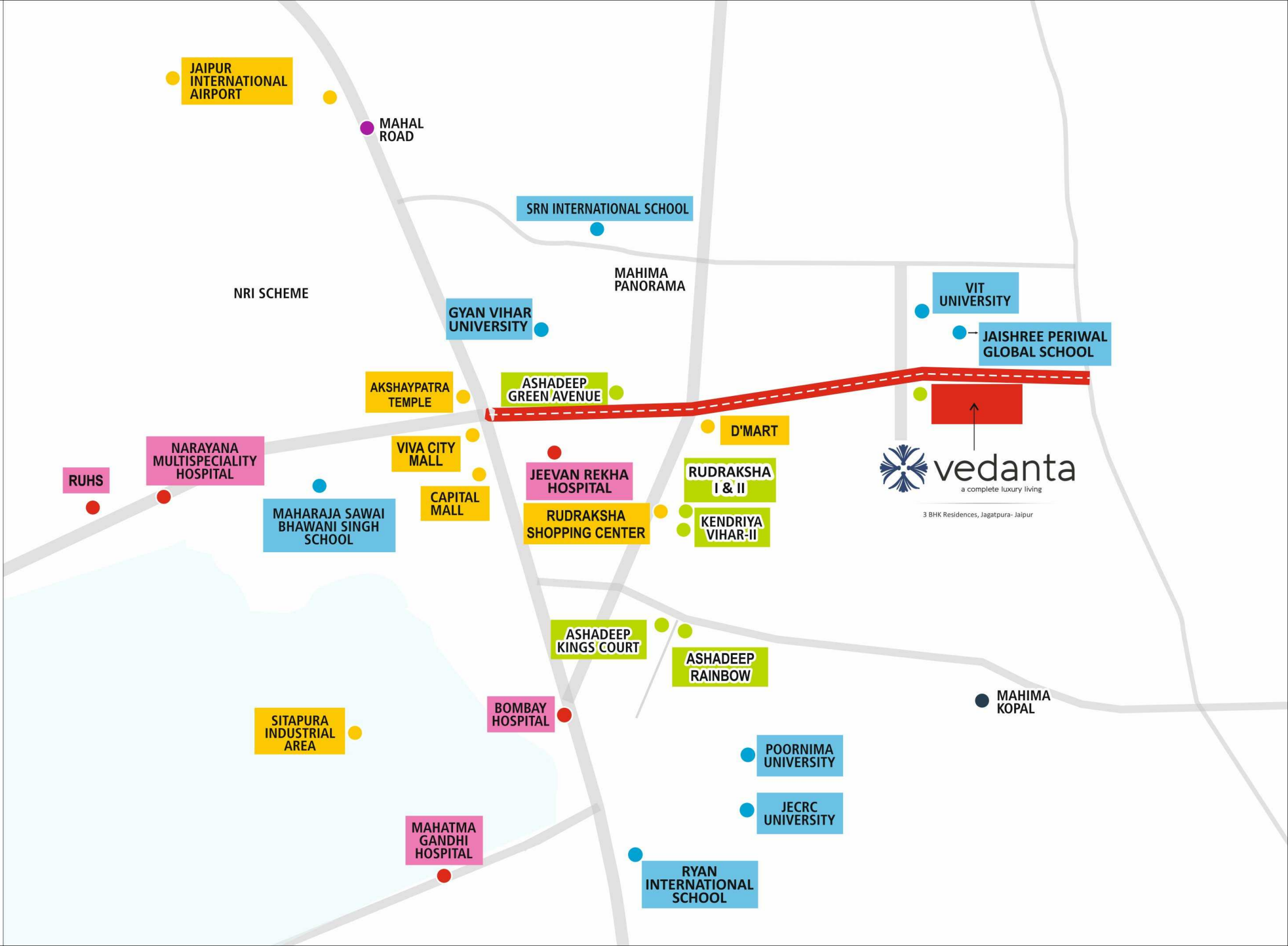


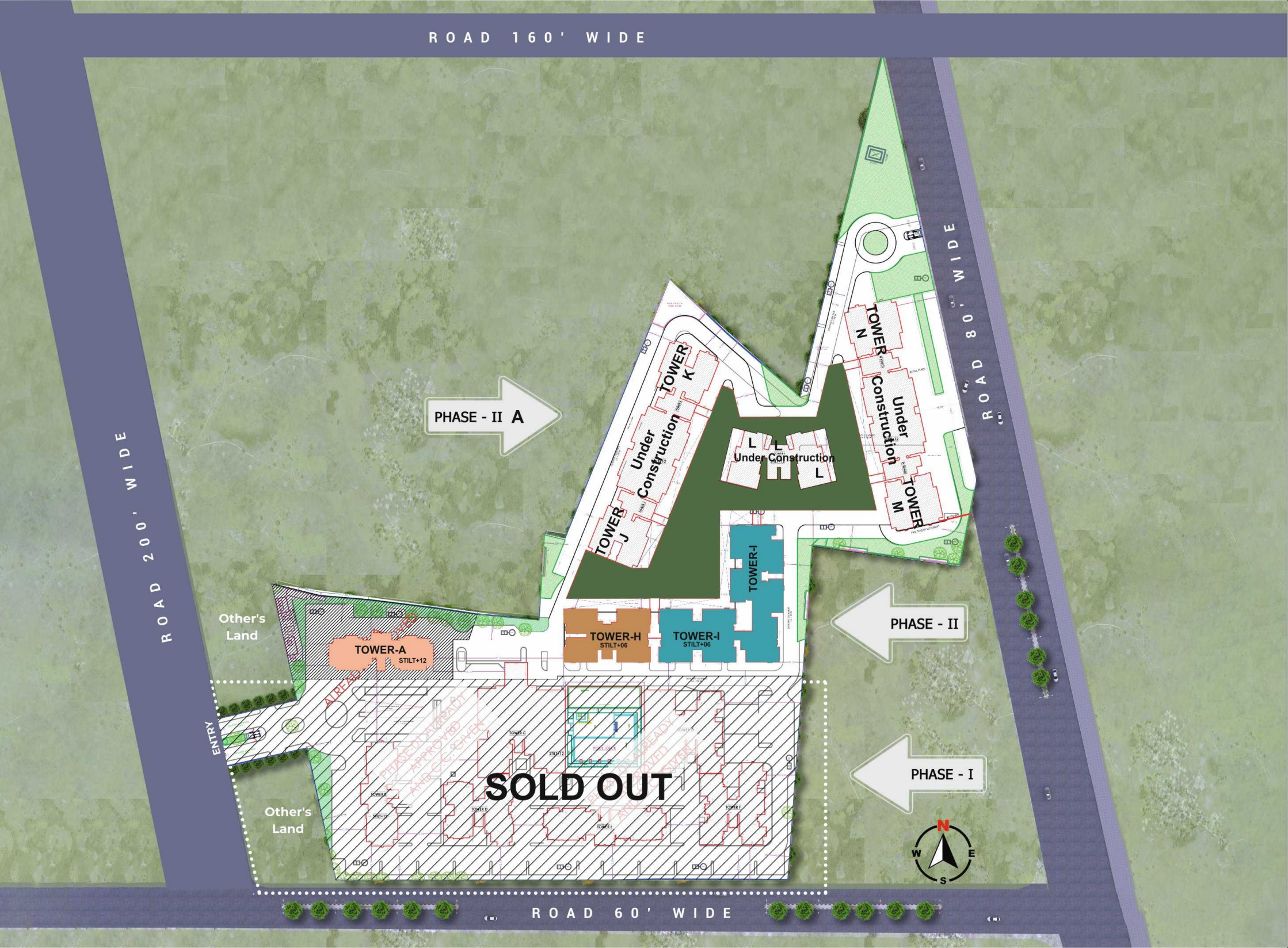
- **Landmarks**
 - Rudraksha Shopping Center 5Min.
 - D'Mart 3Min.
 - Sitapura Industrial Area 5Min.
 - Viva City Mall 4Min.
 - Capital Mall 4Min.
 - Akshay Patra Temple 4Min.
 - Jagatpura Railway Station 10Min.
 - Jaipur International Airport 15 Min.

- **Hospitals**
 - Bombay Hospital 5Min.
 - Jeevan Rekha Hospital 4Min.
 - Medical College Hospital 7Min.
 - Mahatam Gandhi Hospital 7Min.
 - Narayana Multi Speciality Hospital 8 Min.

- **School's & Colleges**
 - Gyan Vihar University 5 Min.
 - SRN International School 3Min.
 - Jaishree Periwal Global School 2 Min.
 - Ryan International School 5 Min.
 - VIT University 2 Min.
 - JECRC University 7 Min.
 - Poornima University 7 Min.
 - Maharaja Sawai Bhawani Singh School 5 Min.

- **Ashadeep Group's Other Projects**
 - Kings Court 5Min.
 - Rainbow 5Min.
 - Kendriya Vihar-II 5Min.
 - Rudraksha I & II 5Min.
 - Green Avenue 5Min.



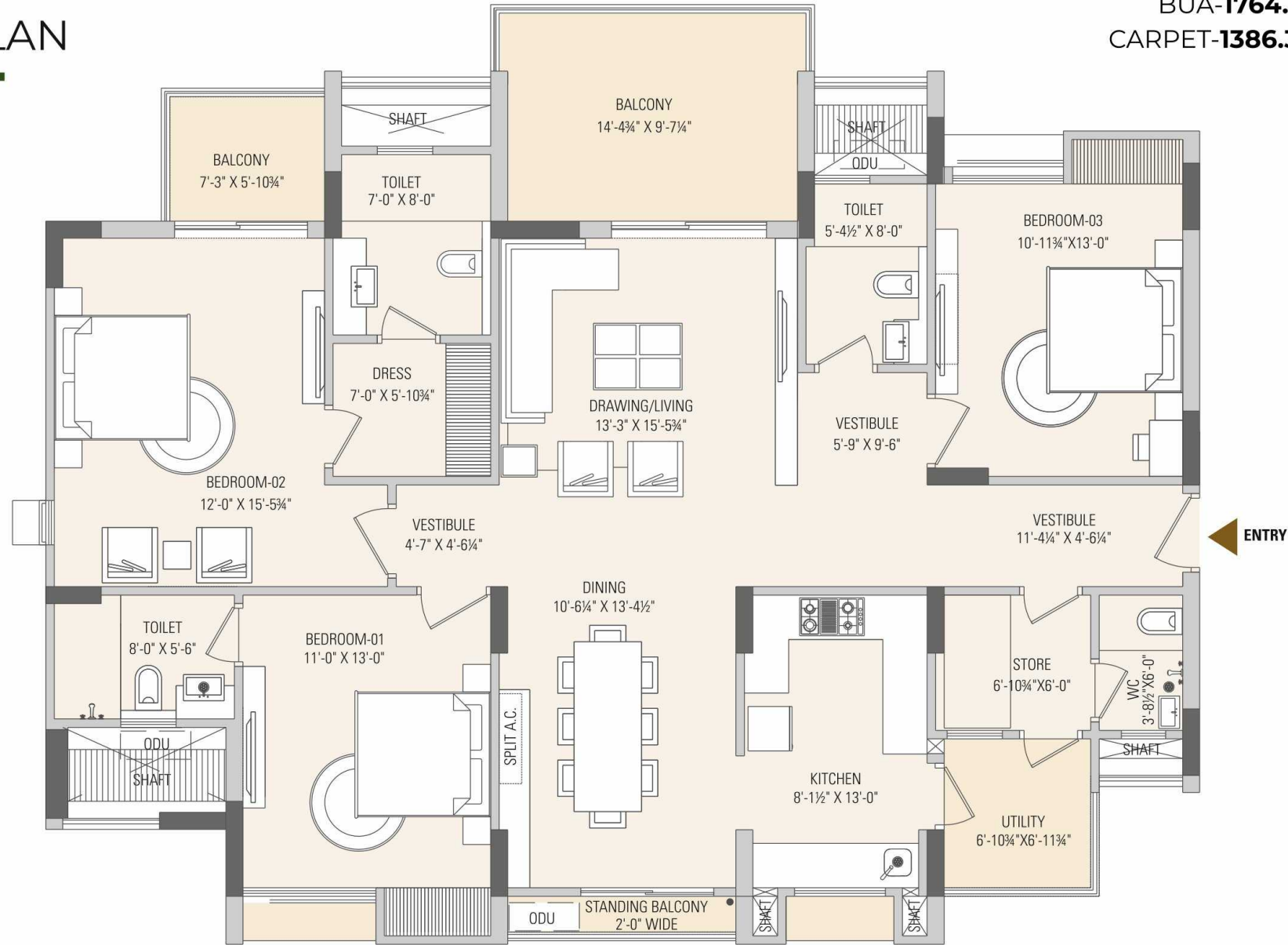


PROJECT FEATURES

Security Automation	Automatic Boom barriers on Entry & Exit Gate. Intercom terminal from main gate CCTV		
Lift	All Lifts with Automotive Rescue Device (ARD) All lifts are Gearless		
Lift Lobby	Well designed lift lobby Flooring Marble / Granite / Tile		
Electrical	0.8 KVA Power Back up in each flat Full power backup for common area		
Water & waste Water Management	Water supply system Centralized RO Plant Rain water harvesting for ground water recharge Sewerage Treatment Plant (STP) Recirculation of treated water for flushing and gardening		
Other Facilities	Ample Open and Landscaped area		
Club	Health	Sports	Others
	Swimming Pool Open / Indoor Gymnasium	Table Tennis Billiards Table Card Room Carrom	Reading Room Community Hall Guest Rooms
Structure	Earthquake Resistance Structure as per norms		
Fire Fighting system	As per Norms		
Common area Maintenance	As per Apartment Act		

3 BHK T-1
UNIT PLAN

SBUA-2293.73 sq. ft.
BUA-1764.41 sq. ft.
CARPET-1386.39 sq. ft.



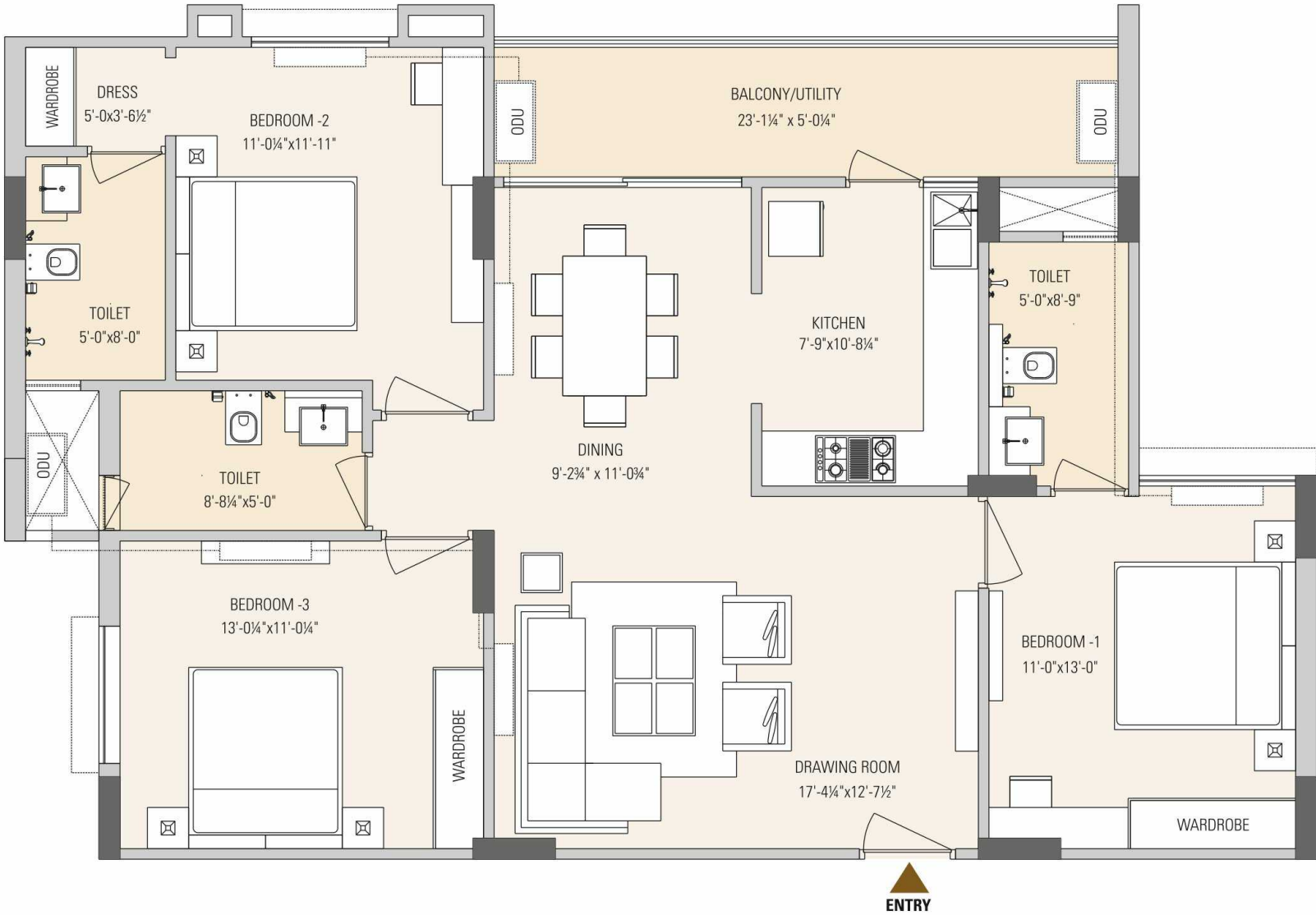
Tower-A



3 BHK TYPE-1 (1st TO 12th) FLOOR PLAN

3 BHK T-2
UNIT PLAN

SBUA-1594.65 sq. ft.
BUA-1226.66 sq. ft.
CARPET-1028.92 sq. ft.



Tower-H, I,

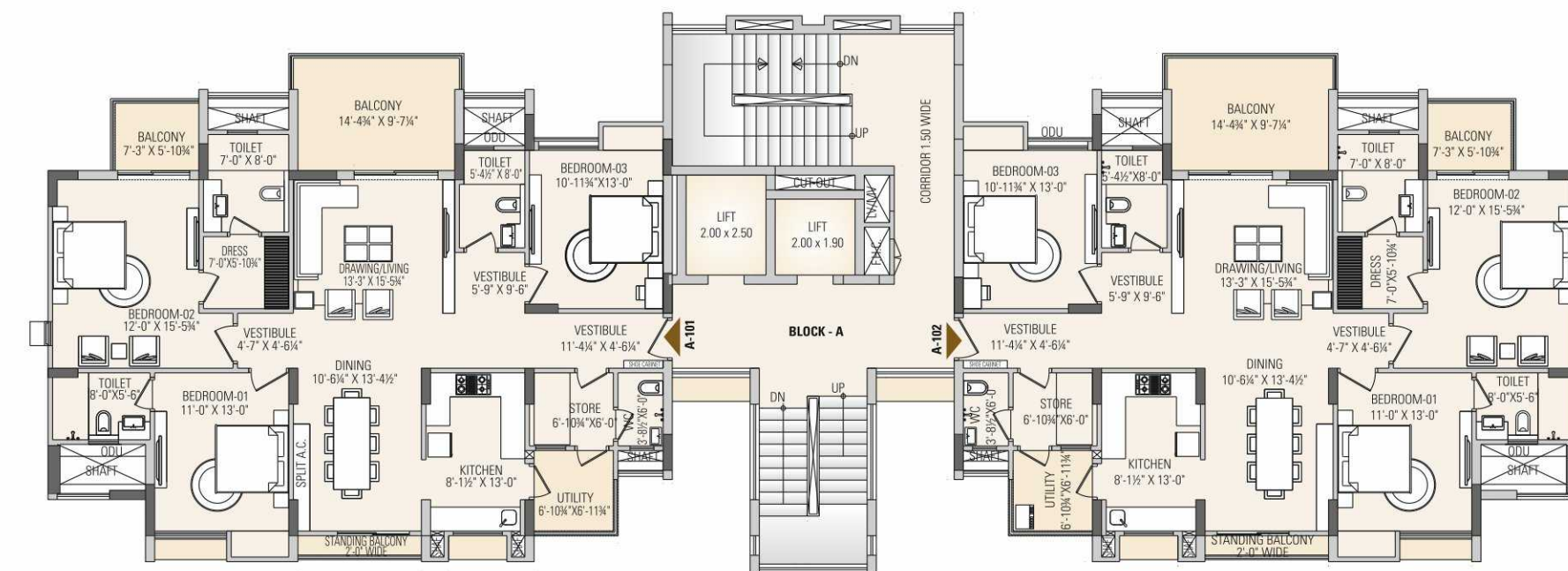


3 BHK TYPE 2 (1st FLOOR TO 6th FLOOR)

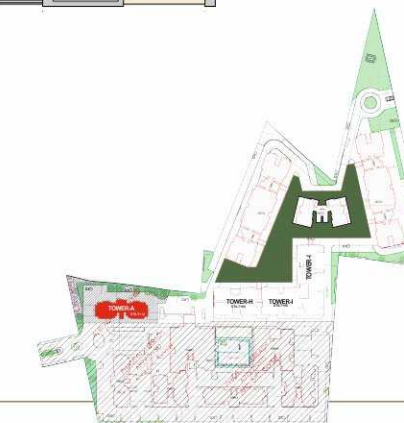


TOWER A

SBUA-2293.73 sq. ft.
BUA-1764.41 sq. ft.
CARPET-1386.39 sq. ft.



TYPICAL (1st TO 12th) FLOOR PLAN

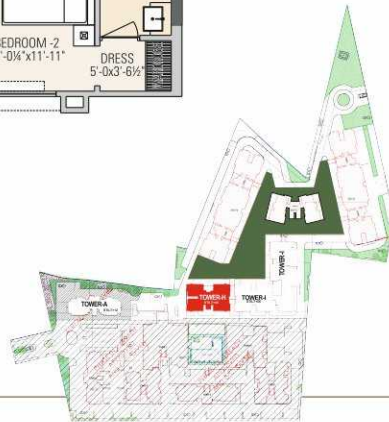


TOWER H

SBUA-1594.65 sq. ft.
BUA-1226.66 sq. ft.
CARPET-1028.92 sq. ft.

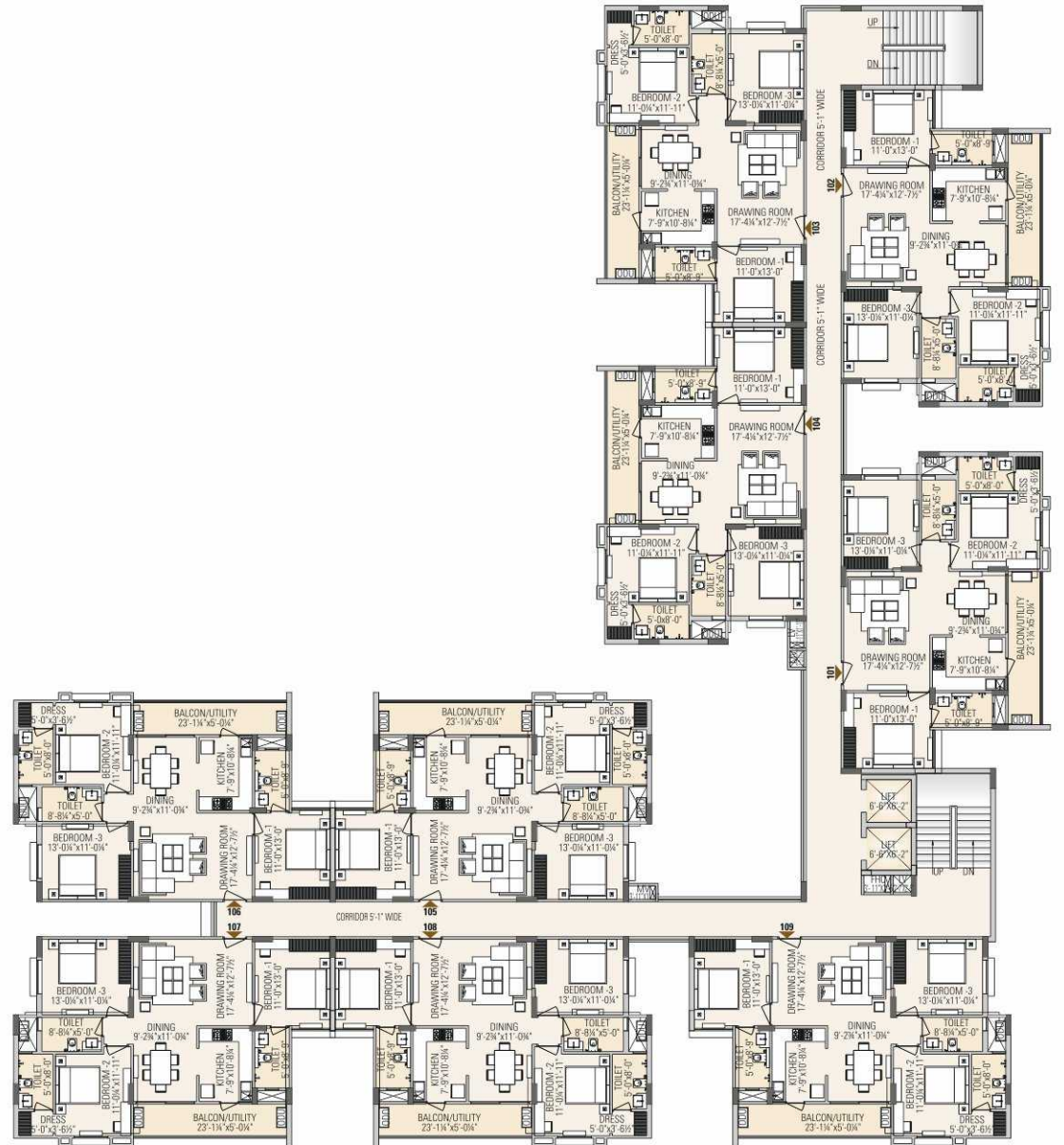


TYPICAL 1st TO 6th FLOOR PLAN

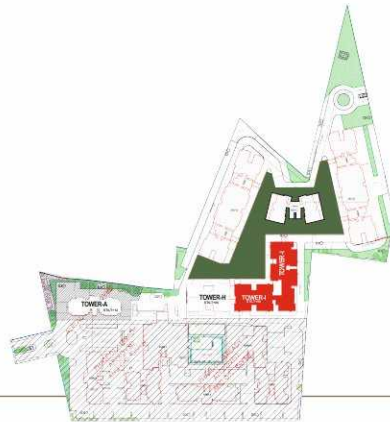


TOWER I

SBUA-1594.65 sq. ft.
BUA-1226.66 sq. ft.
CARPET-1028.92 sq. ft.



TYPICAL 1st TO 6th FLOOR PLAN





Club House Photos



Project Specification

Area	Item	Specification	Brand
Bedroom	Floor	Vitrified Tiles	Johnson/Kajaria/Equivalent
	Wall & Ceiling Finish	POP Finished	
	Wall & Ceiling Paint	Plastic Paint	Berger/Asian/ICI/Equivalent
Toilets	Floor	Tiles	Johnson/Kajaria/Equivalent
	Wall & Ceiling Finish	Tiles upto lintel level & POP above	
	Wall & Ceiling Paint	Plastic Paint	Berger/Asian/ICI/Equivalent
	C P Fittings	Single Lever Fitting	Jaquar/ Grohe/Equivalent
	Sanitary Ware	Wall Hung W.C	Jaquar/ Cera/Hindware/Equivalent
Balcony	Floor	Ceramic Antiskid Tiles	Johnson/Kajaria/Equivalent
	Railing	Iron Railing	
Kitchen	Floor	Vitrified Tiles	Johnson/Kajaria/Equivalent
	Wall & Ceiling Finish	POP Finish	
	Wall & Ceiling Paint	Plastic Paint	Berger/Asian/ICI/Equivalent
	Counter	2' Wide Granite Counter Top 2' Dado Tiles Above Counter	Black/Green/Red Granite Johnson / Kajaria / Equivalent
	Sink	Stainless Steel	Neelkanth/Equivalent
	CP Fittings	Mixture Fittings	Grohe/Jaquar/Equivalent

Area	Item	Specification	Brand
Electricals	MCB Box	Good Quality	Legrand/Havells/Schneider/Equivalent
	Wires	Multi-Strand Copper Wires	Finolex/National/Havells/Equivalent
	Switch	Modular Switches	Legrand/Havells/Schneider/Equivalent
	Provision for AC	Ear marked position for Split A/C in Drawing Room/Bedroom Ear marked position for outdoor unit	
Doors		30 mm internal wooden panelled/flush doors	
		35 mm external wooden panelled/flush doors	
		Provision for wire mesh door in all external door frame	
		Good quality hardware fittings	Dorset/Archies/Equivalent
Windows		Anodized aluminium / UPVC / Powder-coated sliding windows with wire mesh and glass sliding shutters	
		Provision of a steel guard bar	
Staircase		Granite/Natural Stone	
		MS Railing	

TOWNSHIP MAINTENANCE



Security



Housekeeping



Electrician



Plumber



Horticulture



STP

LIFE @ ASHADEEP TOWNSHIP



Independence Day Celebration



Holi Celebration



Dance Competition



Janmashtmi Celebration



Children's Day Celebration



Sports



Ashadeep Group was established in 2002 & is based in Jaipur. The Group has developed many Townships, Group Housing and Urban Infrastructure in Rajasthan. The Group has presence in Jaipur, Behror, Neemrana & Bhiwadi.

DELIVERED

43 Projects

8909 Homes

110 lacs sq.ft. Area

UNDER CONSTRUCTION

3 Projects

310 Homes

20 lacs sq.ft. Area



Green Avenue, Jaipur | 242 Flats



Green Acres, Neemrana | 1298 Homes



Ananta Jagat, Bhiwadi | 306 Flats



Kings Court, Jaipur | 129 Villas



Rainbow, Jaipur | 456 Flats & 120 Villas



Rudraksh, Jaipur | 777 Flats



Developed & Marketed by

Renaissance Buildhome Pvt. Ltd.

6D, Corporate Tower A-2, Near Jawahar Circle, JLN Marg, Jaipur- 302017

Call : +91 95098 31000

E-mail: info@ashadeepgroup.com ; Web: www.ashadeepgroup.com

Resurgent Estate

6D, Corporate Tower A-2, Near Jawahar Circle, JLN Marg,

Jaipur- 302017

Architects

m | a | a r c h i t e c t s
jaipur • banglore • hyderabad

Disclaimer: Site Plan, Floor Plans, Layout Plans, Areas, Dimensions, Specifications etc., may change at sole discretion of the developer and/or the architect, till final completion of the project. Soft Furnishing, Furniture, Appliances, Almirahs, Gadgets etc Shown in this Brochure are not part of the Sale offering. All Floor Plans are subject to the approval of Approving Authority.